



JERUSALEM STONE | CREMA BEIGE

This creamy limestone has a varied texture that is crossed by small veins. Recognized worldwide for its smooth texture, its incomparable shine, its perfect physical characteristics and its extraordinary ability to combine with any natural stone, Crema Beige is considered the best stone, in addition to being the stone most recommended by professionals around the world. Various finishes give a great tool to your project.



60X60



cut-to-size



Broached



Polished



Brushed



Rough Bush Hammered



Furrowed



Sand Blasted



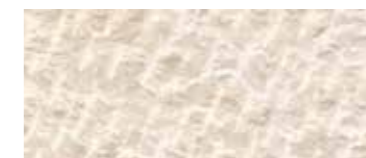
Honed



Scabbled



Leather



Stugged

Test	Specification	Result
Water Absorption (%)	ASTM C97	0.93
Bulk Specific Gravity (Gr/cm3)	ASTM C97	2.630
Compressive Strength (Mpa)	ASTM C170	Perpend. to rift: Wet: 124.1 Dry: 121.5 Parallel to rift: Wet: 137.0 Dry: 133.3
Modulus of Rupture (N/mm2)	ASTM C99	Perpend. to rift: Wet: 5.9 Dry: 5.8 Parallel to rift: Wet: 11.2 Dry: 8.9
Flexural Strength (N/mm2)	ASTM C880	Wet: 7.2 Dry: 8.0
Abrasion Resistance (N/mm2)	ASTM C241	35.4